

# WHALETEQ

## Single Channel ECG Test System SECG 4.0

### User Manual



Version 2025-11-13

PC Software Version V5.0.13.5

Copyright (c) 2013-2025, All Rights Reserved.  
WhaleTeq Co. LTD

No part of this publication may be reproduced, transmitted, transcribed, stored in a retrieval system, or translated into any language or computer language, in any form, or by any means, electronic, mechanical, magnetic, optical, chemical, manual or otherwise, without the prior written permission of WhaleTeq Co. LTD.

### **Disclaimer**

WhaleTeq Co. LTD. provides this document and the programs "as is" without warranty of any kind, either expressed or implied, including, but not limited to, the implied warranties of merchantability or fitness for a particular purpose.

This document could contain technical inaccuracies or typographical errors. Changes are periodically made to the information herein; these changes will be incorporated in future revisions of this document. WhaleTeq Co. LTD. is under no obligation to notify any person of the changes.

The following trademarks are used in this document:



is a registered trademark of WhaleTeq Co. LTD

All other trademarks or trade names are property of their respective holders.

# Contents

<b>1</b>	<b>Introduction.....</b>	<b>7</b>
1.1	Basic Concept.....	7
1.2	Standards/Application .....	8
1.3	Block Diagram/SECG 4.0 Module Overview .....	10
1.4	Main Specifications.....	11
<b>2</b>	<b>Set up .....</b>	<b>15</b>
2.1	Software installation.....	15
2.1.1	<i>System requirements.....</i>	<i>15</i>
2.1.2	<i>SECG 4.0 Software Installation.....</i>	<i>16</i>
2.1.3	<i>USB Driver Installation .....</i>	<i>16</i>
2.1.4	<i>Microsoft .Net Framework 4.0 Installation .....</i>	<i>17</i>
2.2	Connecting to the ECG.....	17
2.3	Set Up a Low-noise Test Environment.....	19
2.4	Firmware Update .....	21
2.4.1	<i>Firmware Update Instruction .....</i>	<i>21</i>
2.5	Main Screen .....	24
2.6	Description of Functional Groups.....	25
2.6.1	<i>Main Function (Main Waveform).....</i>	<i>25</i>
2.6.2	<i>Main Parameters.....</i>	<i>27</i>
2.6.3	<i>DC Offset Settings.....</i>	<i>28</i>
2.6.4	<i>Input Impedance Test.....</i>	<i>29</i>
2.6.5	<i>Output Lead Electrode.....</i>	<i>29</i>
2.6.6	<i>Pacing Parameters .....</i>	<i>30</i>
2.6.7	<i>Output Graphic Display .....</i>	<i>31</i>
2.6.8	<i>Special Functions.....</i>	<i>32</i>
2.6.9	<i>Other Functions (Auto Pacing, Auto Heart Rate, Cal. Mode).....</i>	<i>33</i>
2.6.10	<i>Load ECG File.....</i>	<i>34</i>
2.6.11	<i>Download PhysioNet Database.....</i>	<i>36</i>
2.7	Software Options — SECG Assistant .....	39
2.7.1	<i>Activate the SECG Assistant Software.....</i>	<i>39</i>
<b>3</b>	<b>Testing to IEC and AAMI Standards .....</b>	<b>41</b>
3.1	Relation between IEC Figures and WhaleTeq SECG .....	41
3.2	Terminals P1, P2 and P6.....	42
<b>4</b>	<b>Software Development Kit.....</b>	<b>44</b>
<b>5</b>	<b>Calibration and Software Validation .....</b>	<b>44</b>
5.1	Self-Calibration.....	49



- 6 Troubleshooting..... 52**
- 7 Cautions..... 52**
- 8 Ordering Information..... 53**
  - 8.1 Standard Package..... 53
  - 8.2 Optional Software, Accessories and Services ..... 53
- 9 Revision History ..... 55**
- 10 Contact WhaleTeq ..... 56**

## List of Table

Table 1: Standard/Application .....	8
Table 2: Technical Specifications .....	11
Table 3: Signal Specifications .....	12
Table 4: Signal Add-on Specifications .....	14
Table 5: Pins of A Male D15 Connector and Their Corresponding Leads .....	18
Table 6: Hardware and Firmware Versions .....	23
Table 7: Main Waveform .....	25
Table 8: Pacing Parameter .....	30
Table 9: Cross Reference Table Between Switches and Terminals .	41
Table 10: Calibration Procedure .....	45
Table 11: Troubleshooting .....	52
Table 12: SECG 4.0 Standard Package .....	53
Table 13: Optional Software Add-on Pack .....	53
Table 14: Optional Accessory .....	54
Table 15: Optional Calibration Service and Warranty Extension ....	54
Table 16: Revision History .....	55

## List of Figure

Figure 1: Single-channel Concept .....	7
Figure 2: Simplified Block Diagram .....	10
Figure 3: SECG 4.0 Module .....	10
Figure 4: Pins of A Male D15 Connector.....	18
Figure 5: Low-noise Test Environment Setup.....	19
Figure 6: Firmware Update Confirmation .....	21
Figure 7: Function Table .....	22
Figure 8: Update F/W Button .....	22
Figure 9: Information Dialog.....	23
Figure 10: Firmware Updating.....	23
Figure 11: Firmware Update Completion .....	23
Figure 12: Main Screen .....	24
Figure 13: Main Parameters .....	27
Figure 14: DC Offset Settings.....	28
Figure 15: Input Impedance Test.....	29
Figure 16: Output Lead Electrode.....	29
Figure 17: Pacing Parameter .....	30
Figure 18: Output Graphic Display .....	31
Figure 19: Special Functions .....	32
Figure 20: Other Functions .....	33
Figure 21: "Select Special Waveform" Button .....	34
Figure 22: Load ECG File Button .....	35
Figure 23: "Select Special Waveform" Button .....	36
Figure 24: Download PhysioNet Database .....	36
Figure 25: Manually Download PhysioNet Database (step 2) .....	37
Figure 26: Manually Download PhysioNet Database (step 3) .....	37
Figure 27: Manually Download PhysioNet Database (step 4) .....	38
Figure 28: Activate the SECG Assistant Software Button .....	39
Figure 29: Hardware ID.....	40
Figure 30: Activation Key .....	40
Figure 31: Software Assisted Calibration Mode .....	45
Figure 32: SECG 4.0 Interface .....	49
Figure 33: Self-Calibration Setup .....	49
Figure 34: SECG 4.0 $\pm 300\text{mV}$ DC Offset.....	50
Figure 35: DC Voltage Verification (300mV).....	50
Figure 36: Self-Calibration Setup .....	51
Figure 37: DC Voltage Verification ( $>300\text{mV}$ ).....	51

# 1 Introduction

## 1.1 Basic Concept

The WhaleTeq Single-channel ECG Test System 4.0 (SECG 4.0) provides a single waveform to one or more lead electrodes of diagnostic, ambulatory, or monitoring ECGs, for testing IEC/YY/JJG standards. The following diagram shows the single-channel concept:

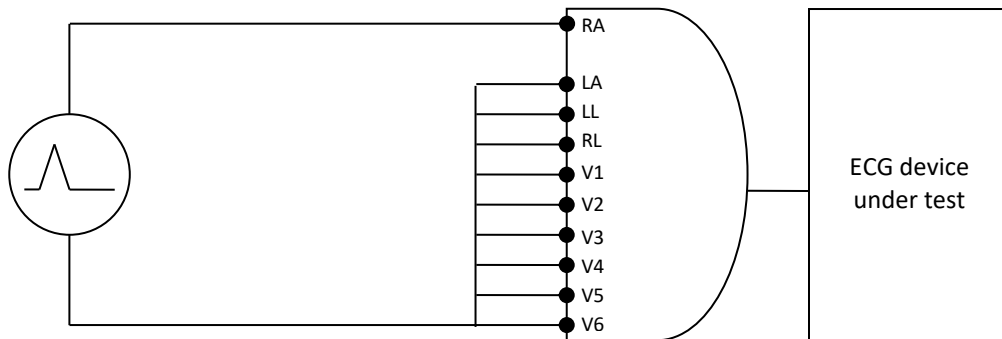


Figure 1: Single-channel Concept

Via a SECG 4.0, the system produces arbitrary waveforms (streamed from the PC with digital to analogue conversion) at up to  $\pm 5V$ , which is then applied to a precision 1000:1 divider to produce the voltages at up to  $\pm 5mV$  level (10mVpp). The SECG 4.0 contains resistor/capacitor networks, DC offset, pacing circuit, and relay switching to provide the full range of single-channel performance tests in IEC/YY/JJG standards as described in Section 1.2.

The basic range of tests in the standards include, for example:

- Sensitivity (accuracy of the mV/mm indication)
- Frequency response (sine wave, and impulse tests)
- Input impedance
- Noise
- Multichannel cross talk
- Accuracy of heart rate indication
- Pacemaker rejection

- Tall T-wave rejection

For a full list of tests, refer to the standard together with Section 1.2.

The system does not provide:

- CMRR tests (this requires a special noise free box, please refer to [CMRR 3.0+](#) on WhaleTeq website)
- Multichannel waveforms, such as the CSE, AHA, MIT databases (this requires a multichannel system, please refer to [MECG 2.0](#) on WhaleTeq website)

## 1.2 Standards/Application

The following table shows the standards for which this system has been designed for including any limitations:

**Table 1: Standard/Application**

Standard	Clause(s)	Limitations / Notes
IEC 60601-2-25:2011 (Diagnostic)	201.12.4: All performance tests  Except: <ul style="list-style-type: none"> <li>• CMRR test and baseline noise → use WhaleTeq CMRR 3.0+</li> <li>• Test referring to the CTS atlas (CAL/ANE waveforms)*, CSE database → use WhaleTeq MECG 2.0</li> </ul> *Note: for most tests CAL/ANE waveforms are alternates. For two tests	For 201.12.4.101 (large DC offset test), the SECG is limited to $\pm 1VDC$ . However, this is almost certainly enough to exceed the point of saturation.  For the test circuit in figure 201.110, switch position A is not provided. This is considered an error in the standard due to the loading effect of R2. Instead the DC offset is provided in

Standard	Clause(s)	Limitations / Notes
	may be required (201.12.4.102.3, test of lead networks; and 201.12.4.105.3 test of ringing from mains notch filter)	series with output as per Figure 201.106. (See section 3.2 for notes on switching between P1, P2 and P6.)
IEC 60601-2-27:2011 (Patient monitoring)	201.7.9.2.9.101 b), 4) and 6) (special test waveforms for Figure 201.101)  201.12.1.101, all performance tests except baseline noise and CMRR (use WhaleTeq CMRR 3.0+ for these tests)	No known limitations
IEC 60601-2-47:2012 (Ambulatory)	201.12.4, all tests except CMRR (use WhaleTeq CMRR 3.0+ for these tests) For all 201.12.1.101 database tests, use WhaleTeq MEGG 2.0 for these tests.	No known limitations
ANSI/AAMI EC 13 2002/(R)2007/C2008	All performance tests except CMRR and as noted left.	See below for Clauses 5.1.4 n) and 5.2.9.1 f), g) <sup>1</sup>

General limitation: this equipment is designed for use with isolated ECG circuits, as are generally provided for medical ECG. If applied to a non-isolated circuit, the noise may be excessive.

<sup>1</sup> 5.1.4 n) Fast QRS: The sampling rate is limited to 0.2ms, some distortion of the pulse is possible below 6ms.

5. 2.9.1 f), g): Functionality is not included at this time; note the test is not applicable to most ECG systems

### 1.3 Block Diagram/SECG 4.0 Module Overview

The following is a simplified block diagram of the system inside the SECG 4.0 module:

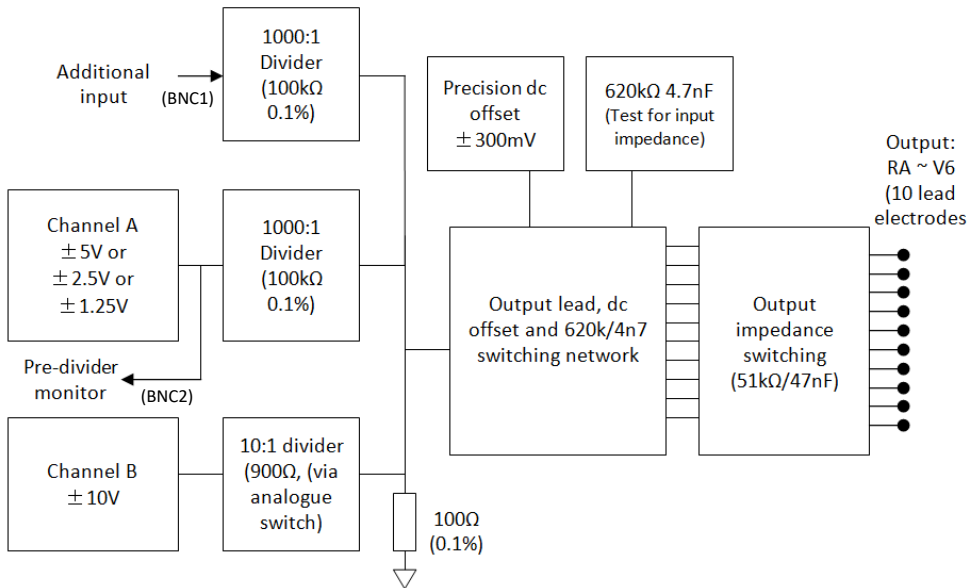


Figure 2: Simplified Block Diagram

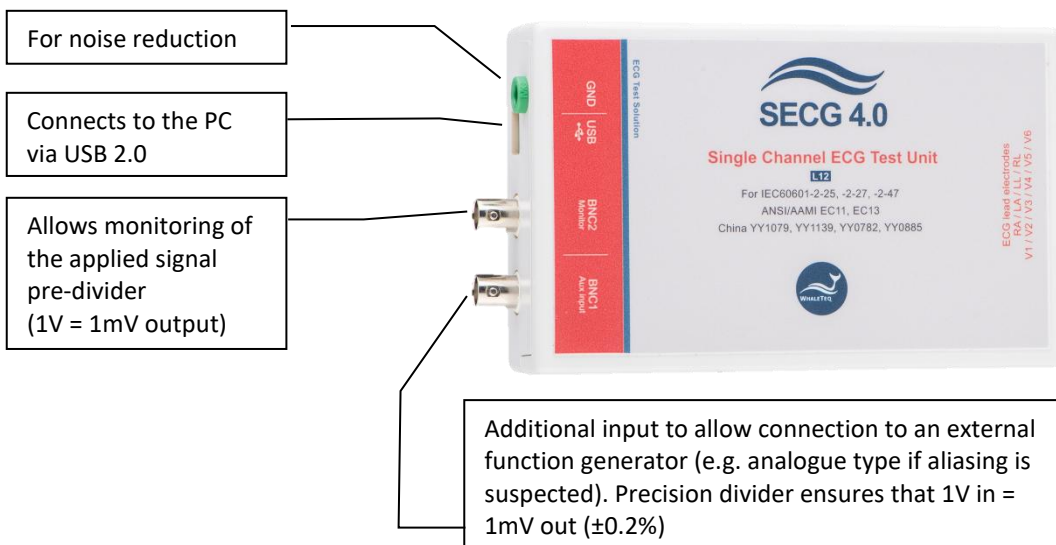


Figure 3: SECG 4.0 Module

## 1.4 Main Specifications

In general, the system has been designed to the standards above, taking into account Clause 201.5.4 in IEC 60601-2-25 and IEC 60601-2-27. The SECG 4.0 specifications are listed.

- **Technical Specifications**

**Table 2: Technical Specifications**

Parameters	Specifications
Main output voltage accuracy	±1% for amplitudes of 0.5mVpp or higher
Main output voltage resolution (DAC resolution)	2.5µV
Frequency / pulse repetition rate accuracy	±0.2%
Pulse duration / timing accuracy (excluding pacing)	±0.2ms
Pacing pulse width accuracy	±1µs
Pacing pulse amplitude accuracy, range	±2mV pulse: ±0.3% >2mV pulse: ±10% Range: ±2mV – ±700mV
Resistor tolerance	±0.5%
Capacitor tolerance	±5%
Precision 1000:1 divider (100kΩ:100Ω)	±0.1%
Sample rate	5kHz ±0.05% (50ppm)
DC offset (fixed, noise free, from internal supercapacitor)	300mV ±0.1%
DC offset	Setting ±1% or ±3mV

Parameters	Specifications
(variable, may include up to 50 $\mu$ Vpp noise)	
Power supply	USB +5V DC supply (no separate power supply required) 0.5A (For high power mode. Typical load<0.25A, up to 0.45A is possible if all relays are turned on.)
Environment	15-30°C (by design, not tested) 30-80% RH (by design, not tested) (Selection of components is such that no effect from the environment is expected.)
Safety	No applicable safety standards (5V is lower than the standard requirement of 12V.)  CE marking based on careful selection of parts (including USB protection IC, as well as special filters to reduce noise from microprocessor (8MHz) and DC/DC converter (200kHz).)

\*Additional specifications may be provided on request.

- **Signal Type**

**Table 3: Signal Specifications**

Parameters		Setting Range	Default Values	Minimum Step Size
Sine	Frequency (Hz)	0.05-500Hz	1Hz	0.01
	Frequency (BPM)	3-30000BPM	60BPM	1
	Amplitude	(-10)-10mV	1mV	0.01

Parameters		Setting Range	Default Values	Minimum Step Size
Triangle	Frequency (Hz)	0.05 - 500Hz	1Hz	0.01
	Frequency (BPM)	3 - 30000BPM	60BPM	1
	Amplitude	(-10) - 10mV	1mV	0.01
Square	Frequency (Hz)	0.05 - 500Hz	1Hz	0.01
	Frequency (BPM)	3 - 30000BPM	60BPM	1
	Amplitude	(-10) - 10mV	1mV	0.01
Rectangle pulse	Frequency (Hz)	0.05 - 5Hz	1Hz	0.01
	Frequency (BPM)	3 - 300BPM	60BPM	1
	Amplitude	(-10) - 10mV	1mV	0.01
	Pulse width	2 - 300ms	100ms	1
Triangle pulse	Frequency (Hz)	0.05 - 5Hz	1Hz	0.01
	Frequency (BPM)	3 - 300BPM	60BPM	1
	Amplitude	(-10) - 10mV	1mV	0.01
	Pulse width	2 - 300ms	100ms	1
Exponential	Frequency (Hz)	0.05 - 3Hz	1Hz	0.01
	Frequency (BPM)	3 - 180BPM	60BPM	1
	Amplitude	(-10) - 10mV	1mV	0.01
ECG-2-27 waveform	QRS Amplitude	(-5.7) - 5.7mV	1mV	0.1
	QRS Duration	5 - 200ms	100ms	1
	T Amplitude	0 - 5mV	0.2mV	0.01
	Frequency (Hz)	0.05 - 6Hz	1Hz	0.01
	Frequency (BPM)	3 - 360BPM	60BPM	1

Parameters		Setting Range	Default Values	Minimum Step Size
Special waveform		Load special waveforms from user's computer		

- **Signal Add-on**

Table 4: Signal Add-on Specifications

Parameters		Setting Range	Default Values	Minimum Step Size
DC offset		(-1000)–1000mV	0mV	1
Pacing	Amplitude	(-700)–700mV	0mV	1
	Duration	0.1–2ms	2ms	0.1
	Pacing rate	10–300BPM / Synchronization	60BPM	1
	Overshooting time constant	0–100ms	0ms	1
	Pulse type	Single pulse, Double pulse (150ms), Double pulse (250ms)	-	-
620kΩ / 4.7nF (Turn on for short circuit)		on / off	On	-
AAMI EC 13 Drift Test Triangle wave (0.1Hz, 4mV) add-on		on / off	Off	-
Noise	Main noise	50Hz, 60Hz, 80Hz, 100Hz (The 80Hz and 100Hz settings are for capacitance)	50Hz	-

Parameters		Setting Range	Default Values	Minimum Step Size
		correction only, not for testing ECG.)		
	Amplitude	0.01–2mVp-p	0.1mV	0.01
Frequency scan (Sine)	Start frequency	0.67–500Hz	0.67Hz	0.01
	Stop frequency	0.67–500Hz	150Hz	0.01
	Duration	10–180s	30s	0.01
Frequency scan (ECG)	BPM	-	3–30BPM	-
	Duration	-	30s	-
Output lead electrode		RA (R), LA (L) , LL (F), V1, V2, V3, V4, V5, V6	RA (R)	-

## 2 Set up

### 2.1 Software installation

#### 2.1.1 System requirements

The Single-channel ECG system uses a normal PC to interface and control it.

PC requirements:

- Windows PC (Windows 7 or later, suggest to use the genuine version)
- Microsoft .NET 4.0 or higher
- Administrator access (essential for installing software, driver, and Microsoft .Net Framework)
- 1.5 GHz CPU or higher
- 1GB RAM or higher<sup>2</sup>

<sup>2</sup> Relative to normal PC processing, there is no special use of PC speed. However, there has been noted a slow increase in system RAM usage over long periods of time up to 30-40MB (related to MS Windows “garbage collection”). PCs with only 512MB or less installed and are running several other

- USB port

### 2.1.2 SECG 4.0 Software Installation

Please follow the below steps to download and execute SECG Software.

1. Download SECG software from WhaleTeq website.
2. Browse to the download location.
3. Unzip the file to your destination folder.
4. Open the destination folder and make sure all files are unzipped in the same folder.
5. Double click on the *SingleChannelECG.exe* to execute the SECG4.0 program.

If SECG software can't be executed properly or this is the firsttime using WhaleTeq product, please refer to below two sections to confirm that USB driver and Microsoft .Net Framework 4.0 are all installed.

### 2.1.3 USB Driver Installation

If Windows device manager can't recognize WhaleTeq product, please follow the below instructions to Install Microchip® USB driver.

#### Microsoft Windows 10

As Windows 10 has built-in Microchip® USB Driver, there're no needs to install any drivers. It just takes a while for Windows Device manager to recognize and install the driver.

#### Microsoft Windows 8 and Windows 8.1

1. Windows 8 and Windows 8.1 can't recognize SECG unit, please download "[mchpcdc.inf](http://mchpcdc.inf)" from WhaleTeq website. This driver is

---

programs (in particular, Internet Explorer), may exceed the available RAM, requiring access to the hard drive and dramatically impacting speed. In this case, streaming interruptions and other problems may occur.

provided by Microchip® for using with PIC microprocessors having built-in USB function.

2. As mchpcdc.inf provided by Microchip® does not contain digital signature, please disable driver signature enforcement in Windows 8 and Windows 8.1. Please click [here](#) to watch the tutorial video.
3. When the SECG 4.0 is connected for the first time, select manual installation, and point to the folder containing the above file. Then continue to follow the instructions to finish the installation. There may be a warning that the driver is not recognized by Windows®, and this can be ignored. Please click [here](#) to watch the tutorial video.

### Microsoft Windows 7

1. Windows 7 can't recognize SECG unit, please download "[mchpcdc.inf](#)" from WhaleTeq website. This driver is provided by Microchip® for using with PIC microprocessors having built-in USB function.
2. When the SECG 4.0 is connected for the first time, select manual installation, and point to the folder containing the above file. Then continue to follow the instructions to finish the installation. There may be a warning that the driver is not recognized by Windows®, and this can be ignored. Please click [here](#) to watch the tutorial video.

#### 2.1.4 Microsoft .Net Framework 4.0 Installation

WhaleTeq software is developed by Microsoft .Net Framework 4.0. If SECG software fails to launch properly, please check whether Microsoft .Net Framework 4.0 or higher versions was installed in the operation system.

If your PC does not install Microsoft .Net Framework 4.0 or higher versions, please download from Microsoft website. Please click [here](#) to watch the tutorial video (from 2:03).

## 2.2 Connecting to the ECG

For connecting the ECG device to the SECG 4.0, use the "ECG breakout box" provided. The ECG breakout box includes:

- (1) RA–V6 terminals: Total 10 terminals, corresponding to the 10 electrodes of 12-lead ECG (or fewer lead channel ECG)
- (2) GND terminal: The terminal connected to the ground.
- (3) CMRR Imbalance with DC: The terminal is only used with CMRR 2.0 for CMRR testing purposes.

Users may also choose to use a male DB15 connector to connect their own breakout box to the SECG 4.0, and then connect the ECG device under test to the breakout box.

Please refer to the figure and table below for the DB15 connector pin definitions.

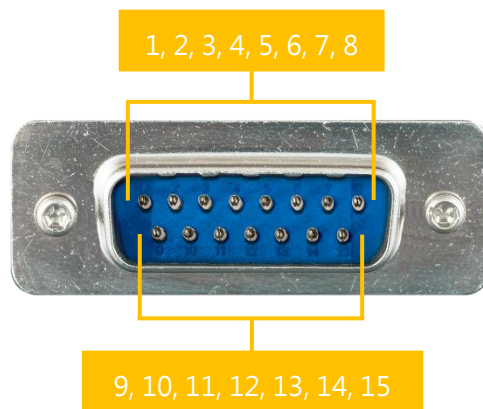


Figure 4: Pins of A Male D15 Connector

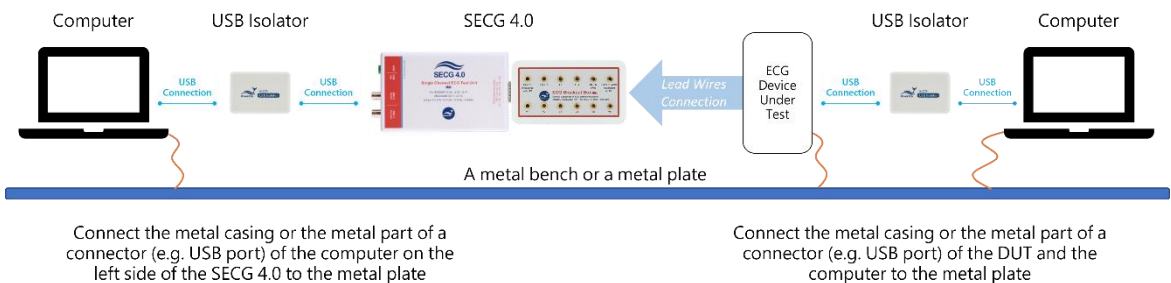
Table 5: Pins of A Male D15 Connector and Their Corresponding Leads

Pin	Corresponding Lead
1	RA
2	LA
3	LL
4	RL
5	V6
6	V5
7	V4
8	V3
9	V2
10	V1
11	NC
12	GND

## 2.3 Set Up a Low-noise Test Environment

A low-noise environment is necessary for testing ECG equipment. This can be achieved relatively easily by:

- (a) Connect the metal casing or the metal part of a connector of the computer on the left side of the SECG 4.0 to the metal plate.
- (b) Connect a USB isolator between the SECG 4.0 and the computer.
- (c) Connect the ECG device under test (hereinafter referred to as DUT) to the right side of the SECG 4.0.
- (d) Connect the metal casing or the metal part of a connector (e.g. USB port) of the DUT and the computer to the metal plate.
- (e) Connect a USB isolator between the DUT and the computer. (If the DUT has a built-in USB isolator, an additional USB isolator is unnecessary.)



**Figure 5: Low-noise Test Environment Setup**

After grounding the SECG 4.0 and the DUT, set the DUT to its maximum sensitivity. If possible, disable the line frequency notch filter, and confirm that the noise level is acceptable before performing the test.

If conducting an input impedance imbalance test with a series connection of 620kΩ impedance, it may result in high noise. For this test, users can enable the line frequency notch filter. If the noise is still too high, users may

consider moving to an environment with fewer electrical appliances or increasing the size of the metal plate placed under devices.

Note:

1. The metal plate's size should cover the SECG 4.0, the DUT, and the computer at least, and it's unnecessary to ground the metal plate itself.
2. Shorter cables are recommended to connect the SECG 4.0 and the DUT to minimize the distance between them and reduce potential interference.
3. Use shielded cables to connect the SECG 4.0 and the DUT to avoid environmental radiation interference.
4. Avoid cables that connect the SECG 4.0 and the DUT overlapping or crossing each other during the test.
5. The USB isolator is available with a separate purchase. Please refer to [WhaleTeq's website](#) for more information.

## 2.4 Firmware Update

Firmware Update only can be supported with specific hardware and firmware, so if your SECG 4.0 doesn't support the feature, please contact Whaleteq for upgrade at [service@whaleteq.com](mailto:service@whaleteq.com).

### Question:

How to check your SECG 4.0 has supported Firmware Update?

### Answer:

Connect the SECG 4.0 device to PC. Go to "About", and check whether the "F/W Version" and "H/W Version" buttons are hidden. (Please see **Step 1** in the below section for where to find "About".)

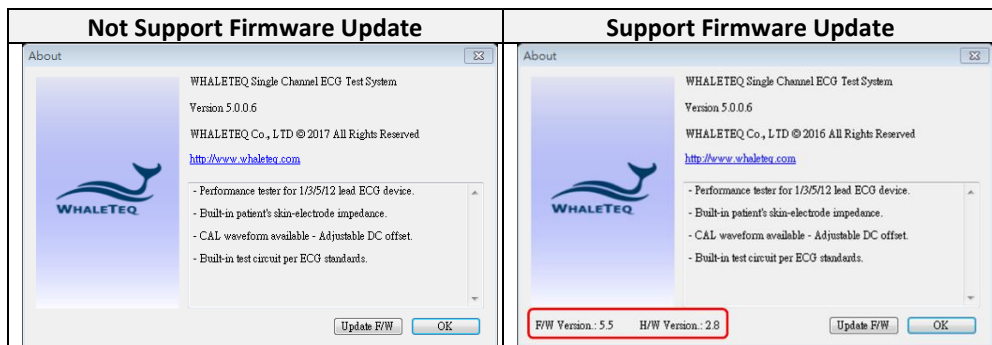


Figure 6: Firmware Update Confirmation

Note: There are risks of losing data if improper options are performed during the firmware update period.

### 2.4.1 Firmware Update Instruction

If your SECG 4.0 supports "Firmware Update" feature. Below is the step-by-step instruction for how to update firmware:

#### Step 1.

Connect the SECG 4.0 device to PC, then open SECG application with version **5.0.0.6 or higher**. Move the cursor to System Menu Bar, right click your mouse. Then there will show up a menu, select "**About**".

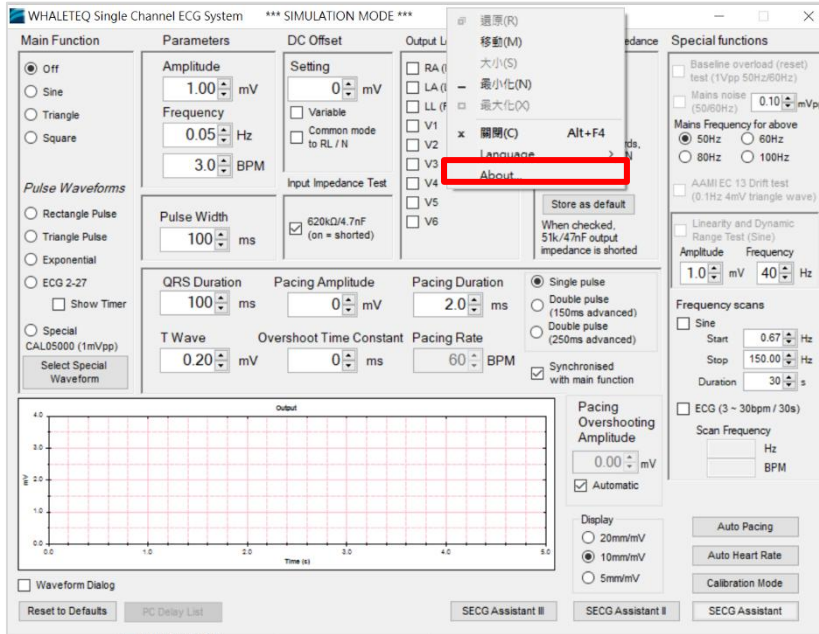


Figure 7: Function Table

### Step 2.

“About” button is popped up. Press “Update F/W” button.

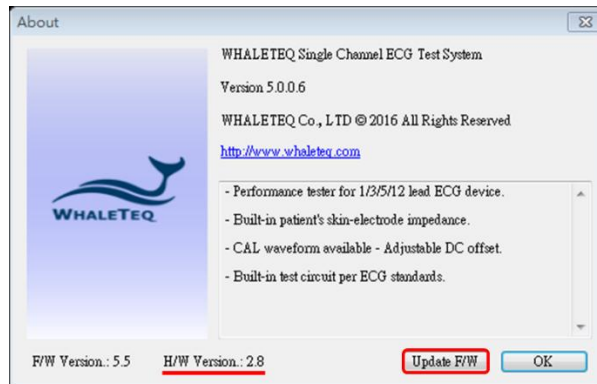


Figure 8: Update F/W Button

### Step 3.

Go to WhaleTeq website, refer to the below table to download compatible Firmware file.

**Table 6: Hardware and Firmware Versions**

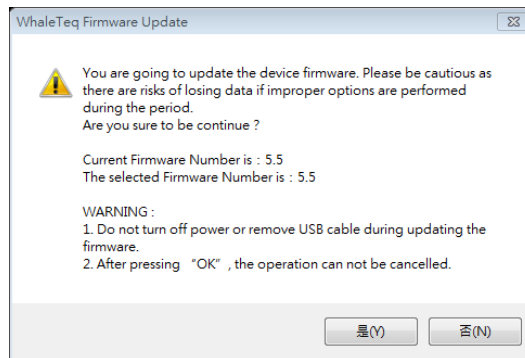
Hardware Version	Firmware Version
2.7	4.4 or above
2.8 or above	5.5 or above

**Step 4.**

Back to SECG AP, select the downloaded firmware file.

**Step 5.**

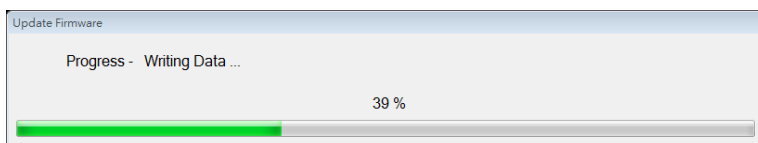
The AP will show an information dialog. After pressing “OK”, the operation cannot be cancelled.



**Figure 9: Information Dialog**

**Step 6.**

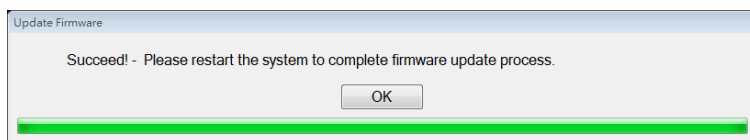
Wait for firmware update complete.



**Figure 10: Firmware Updating**

**Step 7.**

Please restart the SECG system to complete the firmware update process.



**Figure 11: Firmware Update Completion**

## 2.5 Main Screen

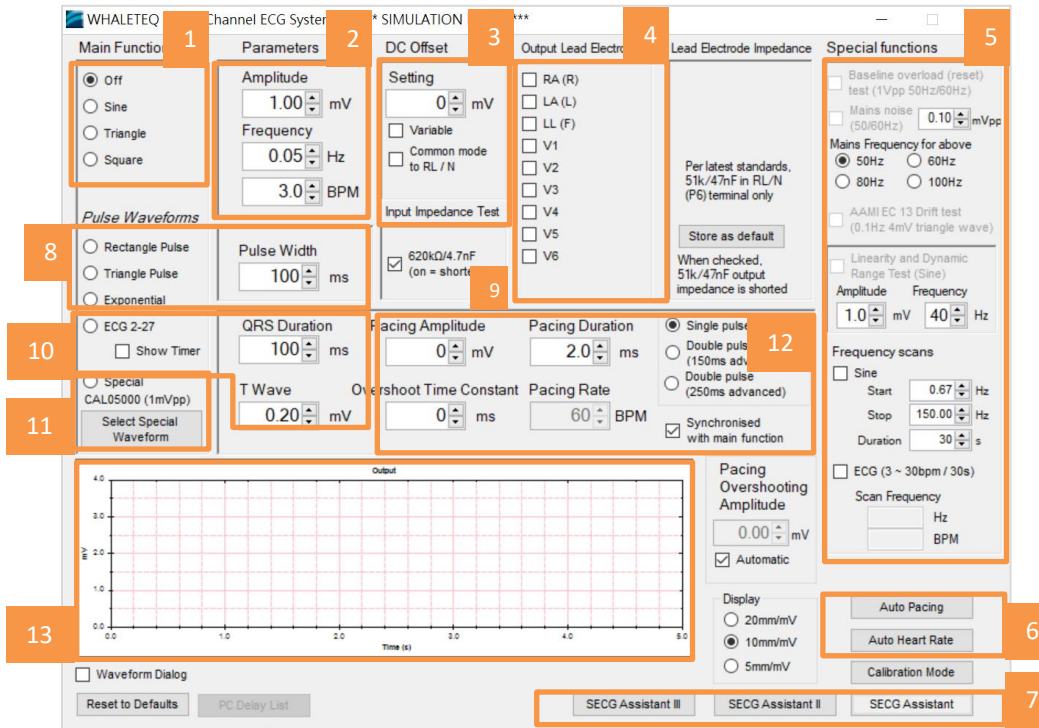


Figure 12: Main Screen

- 01 – Main Function:** Select the main function (waveform) type, such as sine, triangle, etc.
- 02 – Main Parameters:** General parameters for main waveform and pulse waveforms.
- 03 – DC Offset:** DC offset settings.
- 04 – Output Lead Electrode:** Select the lead electrode which the output is switched to.
- 05 – Special Functions:** The functions for special test, such as frequency scan.
- 06 – Automated Functions:** Provide automated test with different arrange combinations.
- 07 – SECG Assistant:** Step-by-step guidance for standard performance tests. “SECG Assistant” is for IEC, “SECG Assistant II” is for YY and JIG (China standard), and “SECG Assistant III” is for GB.
- 08 – Pulse Waveforms:** Select the pulse waveform type. “Pulse Width” is a related parameter.

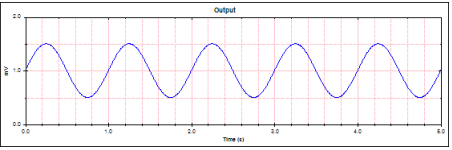
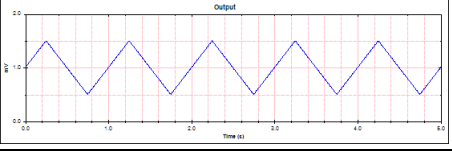
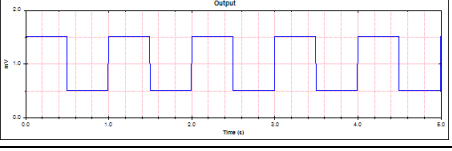
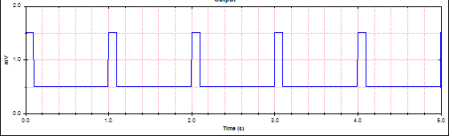
- 09 – Input Impedance Test:** Select if  $620k\Omega/4.7nF$  is in circuit (for input impedance test).
- 10 – ECG 2-27:** A special waveform related to the ECG waveform (IEC 60601-2-27). QRS Duration and T Wave are the parameters for this waveform.
- 11 – Special Waveform:** Provide CAL and AAMI waveforms. “Load ECG” function, the function allows customer to play their own waveform, is also provided here.
- 12 – Pacemaker Parameters:** Parameters related to pacemaker pulses.
- 13 – Output Waveform:** Provide a semi-real time graphical display of the current signal.

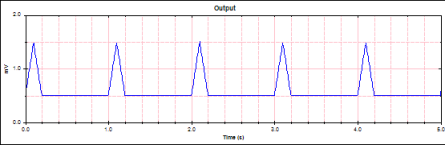
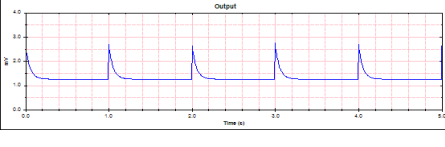
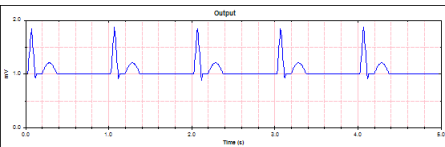
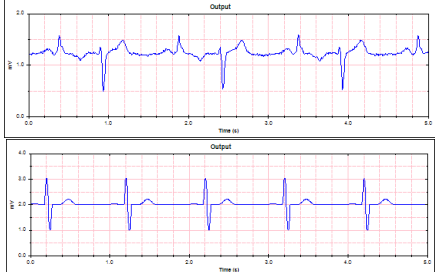
## 2.6 Description of Functional Groups

### 2.6.1 Main Function (Main Waveform)

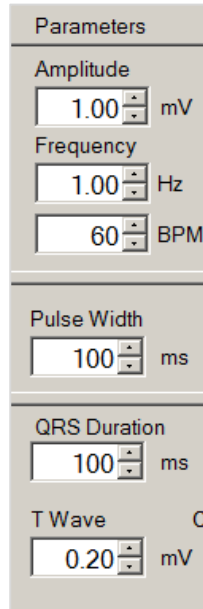
This group allows the operator to select the main waveform to be used in the test, from the following:

Table 7: Main Waveform

Waveform Type	Description	Sample Waveform
Sine	Basic sine wave, according to the amplitude (mVpp) and frequency (Hz or BPM).	
Triangle	Basic triangle wave, according to the amplitude (in mVpp) and frequency (Hz or BPM).	
Square	Basic square wave, according to the amplitude (mVpp) and frequency (Hz or BPM).	
Rectangle pulse	A rectangular pulse, according to the amplitude setting, pulse width (ms) and pulse	

Waveform Type	Description	Sample Waveform
	repetition rate (frequency, Hz or BPM).	
Triangle pulse	A triangle pulse, according to the amplitude setting, base pulse width (ms) and pulse repetition rate (frequency, Hz or BPM).	
Exponential	Exponential waveform, used to Hysteresis test, according to the amplitude (mVpp) and frequency (Hz or BPM).	
ECG	Waveform according to IEC 60601-2-27, Figure 201.110 and 201.113, with adjustable parameters for amplitude (mVpp), frequency (Hz or BPM), QRS duration and T wave amplitude.	
Special	A range of stored waveforms including ANSI/AAMI waveforms, some selected CAL waveforms, and loaded waveform. For these waveforms, the amplitude and frequency settings have no effect.	

## 2.6.2 Main Parameters



Parameters	
Amplitude	1.00 mV
Frequency	1.00 Hz
	60 BPM
Pulse Width	100 ms
QRS Duration	100 ms
T Wave	0 mV
	0.20 mV

Figure 13: Main Parameters

### **Amplitude:**

Adjust the waveform amplitude from 0 to 10mV at a 0.01mV resolution. For all waveforms, the amplitude represents the peak-to-peak value. For example, for a 1mV sine wave, the actual waveform varies between +0.5mV and -0.5mV. This correlates with testing requirements in standards.

### **Frequency:**

The frequency can be set in either Hz or beats per minute (BPM). Changing one will automatically change the other to match. For pulse waveforms (rectangle, triangle, ECG), the frequency can also be referred to as the pulse repetition rate, or heart rate. For some pulse settings, the frequency is limited to prevent overlapping pulses.

### **Pulse Width:**

Apply to rectangle, triangle, and exponential pulse waveforms only. For the rectangle, the pulse width is defined as the time between crossing the 50% point in rising and falling edges of the pulse<sup>3</sup>. For triangle pulses, the setting

<sup>3</sup> To minimise ringing due to ECG notch filters, rectangle pulses have a rise time of 1ms. This means that a 20ms rectangle pulse will actually have a 21ms base and a 19ms at the top of the pulse. This

matches the base of the triangle pulse. For exponential pulse, the set pulse width is time constant. Pulse width can be set down to 2ms<sup>4</sup>.

### **QRS Duration:**

Allow the setting of the QRS component of the ECG wave in IEC 60601-2-27, in the range of 10 to 120ms, matching the requirements of the standard<sup>5</sup>.

### **T Wave:**

Allow setting of the amplitude of the T-Wave in ECG waveforms, to verify tall T-wave rejection ability of patient monitors according to IEC 60601-2-27. The maximum amplitude is 2.5mV. For the heart rate accuracy test in IEC 60601-2-27, a T-wave component is not required. In this case, set the T-wave to zero.

## 2.6.3 DC Offset Settings

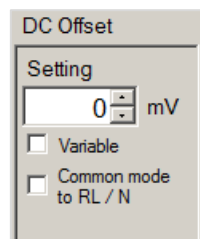


Figure 14: DC Offset Settings

This function allows the operator to switch in a DC offset. In the default condition (not variable), only +300mV, 0 or -300mV can be set. In this mode, the DC offset is sourced from an internal “supercapacitor” which at least 3 minutes of accurate and stable 300mV DC offset to be placed in series with the main waveform, without impacting the quality of that main waveform. The capacitor is charged while not in use (i.e., when the setting is zero).

---

definition ensures that the pulse integral matches the setting, e.g. a 3mV 100ms pulse will have an integral of 300μVs.

<sup>4</sup> Note the sampling rate is limited to 0.2ms. Therefore a 2ms pulse will have limited time resolution.

<sup>5</sup> This range has increased to include 10ms to allow for the new heart rate test in IEC 60601-2-27:2011 (a QRS of 10ms should not provide any heart rate).

In the variable mode, the DC offset is provided by a second channel. This mode is intended only for an investigation into the point in which “LEADS OFF” or similar alarms are provided. It is limited to 1000mV.

The “Common mode to RL/N” places the 300mV offset in series with the RL/N as per IEC 60601-2-25, switch position C in Figure 201.110.

#### 2.6.4 Input Impedance Test

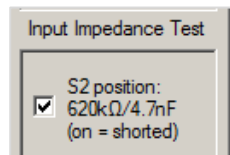


Figure 15: Input Impedance Test

This check box allows the user to switch in an impedance of 620kΩ//4.7nF in series with the main function, for testing the input impedance of the ECG device under test. When the check box is ticked, the impedance is shorted. The  $\pm 300\text{mV}$  DC offset can be used in conjunction with this test.

#### 2.6.5 Output Lead Electrode

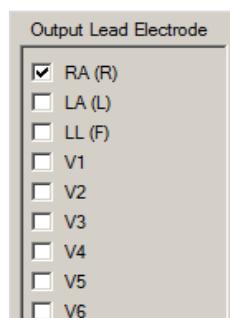


Figure 16: Output Lead Electrode

This section allows the user to select which lead electrode the output is connected to (e.g., terminal P1 in the IEC 60601-2-25, Figure 201.106).

Unselected electrodes are connected to the system ground (terminal P2 in Figure 201.106).

More than one lead electrode may be selected. For example, if it is desired to have Lead I and Lead II have a positive indication, LA and LL can be selected.

### 2.6.6 Pacing Parameters

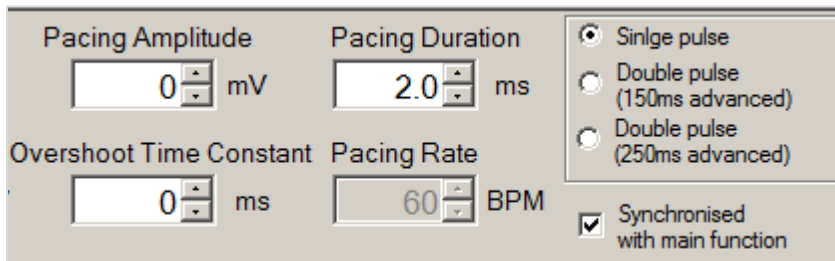


Figure 17: Pacing Parameter

In general, a pacemaker pulse can be added to any main function (sine/triangle/ECG etc.), with the following parameters:

Table 8: Pacing Parameter

Parameter	Description
Pacing Amplitude	This can be set in steps of 2 ranging from -700mV to +700mV. When set to zero the pacing function is turned off regardless of other pacemaker settings. When set at +2mV or -2mV the pacing pulse comes from the main 1000:1 divider, which is accurate to better than $\pm 1\%$ . For settings above 2mV, the output comes from Ch2, which has a design accuracy of $\pm 1\%$ or $\pm 5\text{mV}$ .
Pacing Duration	Can be set between 0.1ms and 2.0ms, covering the range required by all standards.
Overshoot Time Constant	Settings from 2ms to 100ms, creates an overshoot according to Method A of IEC 60601-2-27 (0.25 of the pacing amplitude or 2mV, whichever is smaller).

Parameter	Description
Pacing Rate/ synchronized with main function	<p>If the “Synchronized with main function” checkbox is ticked, the pacing pulse will be synchronized with the main function, such as the ECG waveform in IEC 60601-2-27.</p> <p>If this box is not ticked, the user can set the pacing rate independent of the main function (e.g., 80BPM as required by IEC 60601-2-27, 100BPM according to IEC 60601-2-51).</p>
Single/Double pulses, 150ms and 250ms advanced	This group selects whether single or double pulses are required according to IEC 60601-2-27. If double pulses are required, they can be 150ms or 250ms advanced.

### 2.6.7 Output Graphic Display

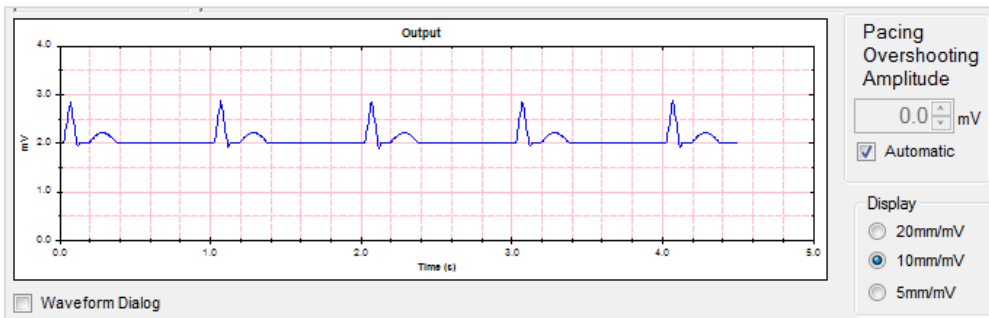


Figure 18: Output Graphic Display

The output display provides an image similar to that provided by ECGs. The sensitivity of the display range may be set at 4mm/mV, 10mm/mV, or 20mm/mV to cover the full range of waveforms offered by the system. The time rate is fixed.

The output display uses the same data as used in the DAC output and serves as a cross-check of the selected waveform, and also allows the user to view the original waveform as filters in the ECG device under test can substantially alter the waveform. Pacing pulses are shown in purple.

For Version 4.0, the output range is fixed at  $\pm 5\text{mV}$ .

## 2.6.8 Special Functions

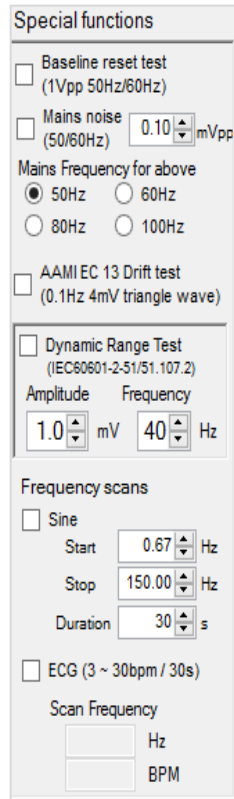


Figure 19: Special Functions

### Baseline Reset Test (sine wave only):

When checked the parameters are ignored and a large signal of 1Vpp (0.354Vrms) is applied. It is intended to test the ECG's response to overload, in a particular automated resetting of baseline (due to high pass filtering). When unchecked, the system reverts to the previous settings (e.g., 1mVpp 10Hz signal). Mains frequency of the test can be selected from 50Hz or 60Hz.

### Mains Noise (ECG 2-27 waveform only):

When checked adds a small sine wave at mains frequency of 50Hz or 60Hz. Range is from 0.05mVpp—0.2mVpp (additional range added for EC 13). Settings of 80Hz and 100Hz are used for calibration of capacitors only, not intended for testing ECGs.

### AAMI EC 13 Drift Test (ECG 2-27 waveform only):

When checked adds 4mVpp 0.1Hz triangle waveform to the ECG signal (for testing baseline drift).

Dynamic Range Test (square wave only):

When checked adds a 1mVpp waveform at the frequency indicated (20Hz, 30Hz, or 40Hz), intended for combination with an adjustable square wave for testing Clause 51.107.2 in IEC 60601-2-51.

Frequency Scans:

“Sine” may be used with IEC 60601-2-51 tests or to test systems with extended frequency response. This system uses a fixed sampling rate of 5kHz which has been found to reduce problems of beating from other digital sources. If beating still occurs, a separate analog input at BNC1 is provided to allow testing with analogue-type function generators.

“ECG” can be used for testing IEC 60601-2-27 heart rate below 30BPM as indicated in the standard (0 – 30BPM over 30s). As a frequency of “0” is infinitely long, the scan starts at 3BPM.

### 2.6.9 Other Functions (Auto Pacing, Auto Heart Rate, Cal. Mode)

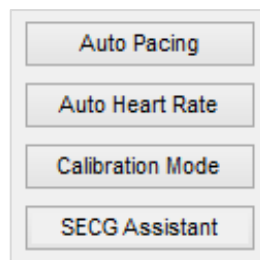


Figure 20: Other Functions

Auto Pacing: This opens a new window for automatically cycling through all the combinations required for pacemaker testing in IEC 60601-2-27 (Clause 50.102.13).

Auto Heart Rate: This opens a new window for automatically cycling through all the combinations required for heart rate testing in IEC 60601-2-27 (Clause 50.102.15).

Calibration mode: Opens a new window (see Section 4)

### Recommended use for Auto Pacing:

This option is intended to be used in conjunction with a trend mode in a patient monitor. If the patient monitor can reject pacing pulses, the heart rate should not be affected. Therefore, the test should be set up with a mode that has a constant heart rate.

For the tests in IEC 60601-2-27, the tests can be grouped into synchronized (heart rate and pacing is 60BPM), and asynchronous (heart rate 30BPM, pacing 80BPM).

In addition, the  $\pm 2\text{mV}$  pacing pulse uses a separate range. Changing to this range can cause switching transients that can affect the heart rate. Therefore, separately out testing for  $\pm 2\text{mV}$  is recommended.

Based on experience, it is recommended to have a change interval of at least 30s. With the selected time, users should verify by simulation that the trend mode will clearly show up problems (e.g., deliberately set a wrong heart rate for 10s, and verify this is detectable).

Note that most patient monitors will have problems with the overshoot function. Users should experiment first to find the overshoot that the patient monitor can handle, or test this separately (limit the overshoot time to 0ms only).

### Recommended use for Auto Heart Rate

As above, tests for the Auto Heart Rate are intended for use with trend monitoring on a patient monitor, and should be grouped according to heart rates.

#### 2.6.10 Load ECG File

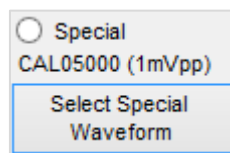


Figure 21: "Select Special Waveform" Button

This function is implemented on the “Special Waveforms” window. In that window, a new button is created and a text box. The button name in code is “Load ECG”.

Click the “Select Special Waveform” button to open the “Special Waveforms” window.

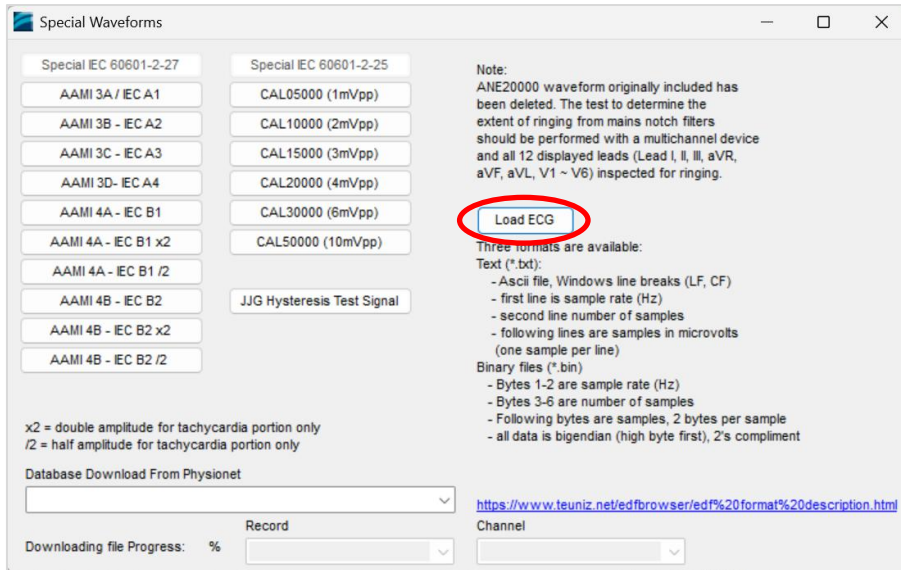


Figure 22: Load ECG File Button

The “Load ECG” function supports two formats: Text and Binary files.

#### Text (\*.txt):

- Ascii file, Windows line breaks (LF, CF)
- First line is sample rate (Hz)
- Second line number of samples
- Following lines are samples in microvolts (one sample per line)

#### Binary files (\*.bin):

- Bytes 1-2 are sample rate (Hz)
- Bytes 3-6 are number of samples
- Following bytes are samples, 2 bytes per sample
- All data is bigendian (high byte first), 2's compliment

The maximum size of loaded file is 100 million samples.

### 2.6.11 Download PhysioNet Database

Please follow the steps below to download the PhysioNet database:

1. Click the “Select Special Waveform” button to open the “Special Waveforms” window.

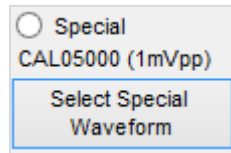


Figure 23: “Select Special Waveform” Button

2. Select “Abdominal and Direct Fetal Electrocardiogram Database (adfecgdb)” and choose the desired “Record” and “Channel”. The SECG 4.0 will automatically connect to the PhysioNet website to download the data.

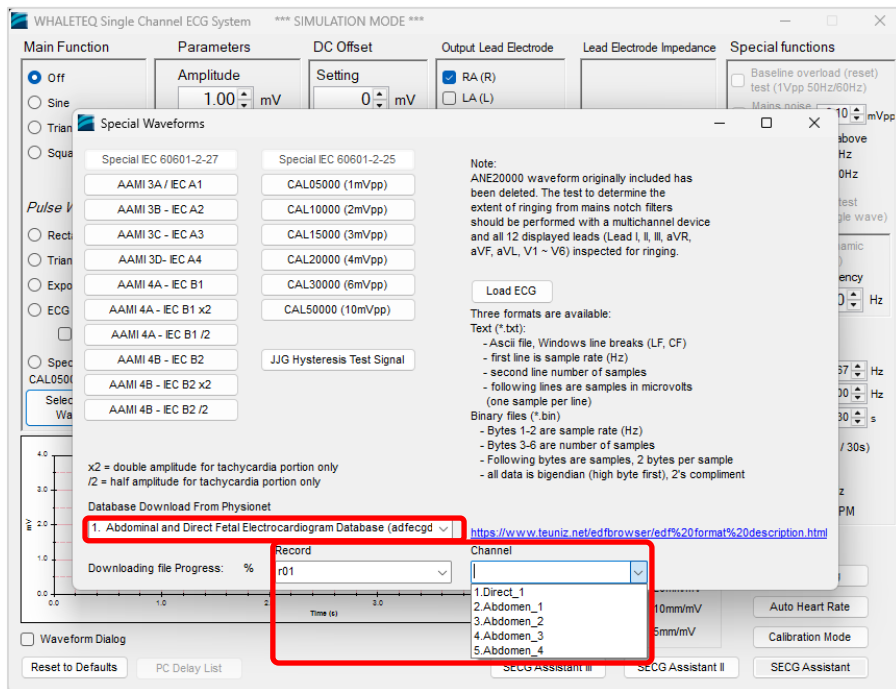


Figure 24: Download PhysioNet Database

If a “Network Downloading Failed” message appears, please follow these steps to manually download the data:

1. Visit <https://physionet.org/content/adfecgdb/1.0.0/> to access the files.
2. Download the desired .edf file.

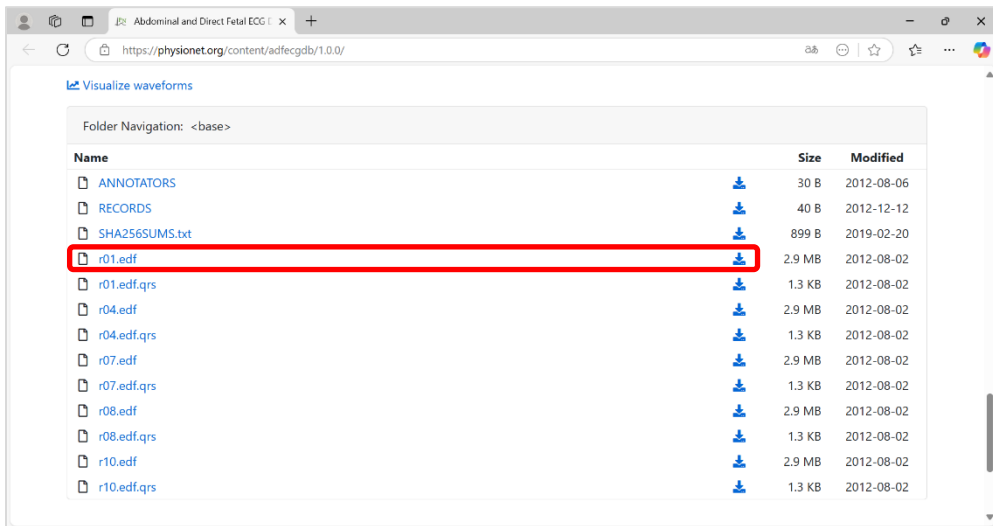


Figure 25: Manually Download PhysioNet Database (step 2)

3. Save the downloaded file to the “C:\Physionet\SECG\adfecgdb” folder.



Figure 26: Manually Download PhysioNet Database (step 3)

4. Return to the “Special Waveforms” window and select the “Record” and “Channel” of the downloaded file to output signals.

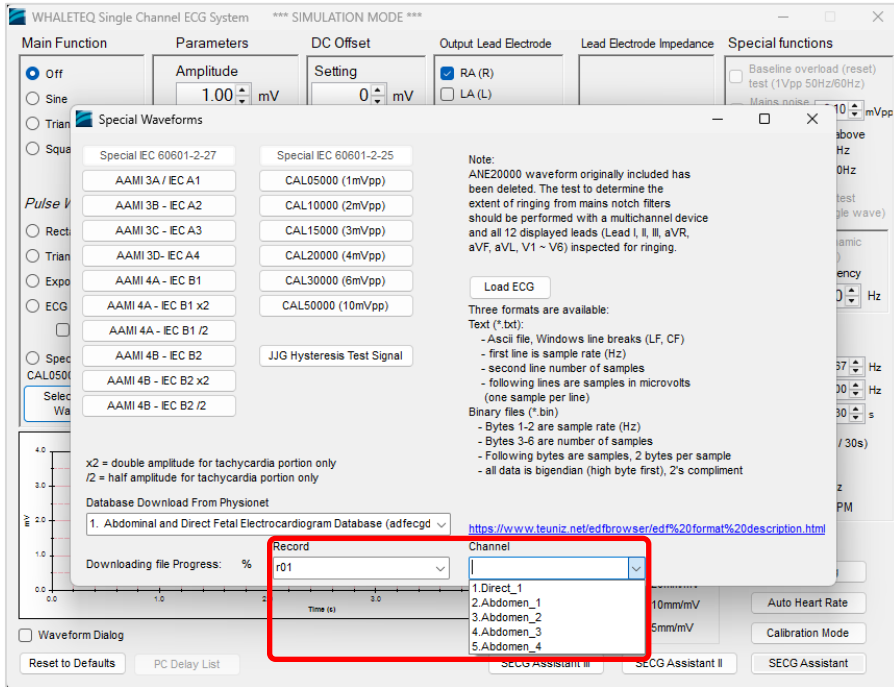


Figure 27: Manually Download PhysioNet Database (step 4)

## 2.7 Software Options— SECG Assistant

SECG Assistant software option is a companion software add-on to enhance the function of SECG 4.0. It supports IEC 60601-2-25/27/47, YY1079/1139/0782/0885/9706.247, JIG 760/1041/1042, and GB9706.225/9706.227. What’s more, it also supports IEC 60601-2-26. SECG Assistant software allows the user to save a lot of testing time.

### 2.7.1 Activate the SECG Assistant Software

Once you have installed the SECG 4.0, you may also activate your purchased SECG Assistant Software. **Please connect SECG to your computer**, then follow the two steps below to activate your SECG Assistant Software.

\*Please note the activation of SECG Assistant Software will be paired with only one computer or SECG 4.0 device. Make sure you choose the designated computer or SECG 4.0 device prior to the activation.

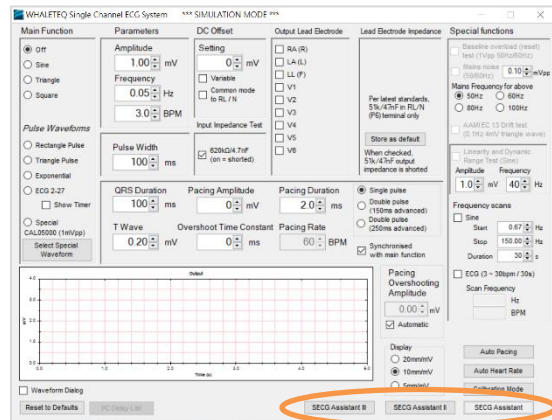


Figure 28: Activate the SECG Assistant Software Button

First click on the “SECG Assistant” button to launch SECG Assistant Software. When you launch your SECG Assistant Software for the first time, you will be prompted to enter your activation key.

#### Step 1:

Copy the Hardware ID / SECG Device ID and send it to [service@whaleteq.com](mailto:service@whaleteq.com) to request for an activation key.

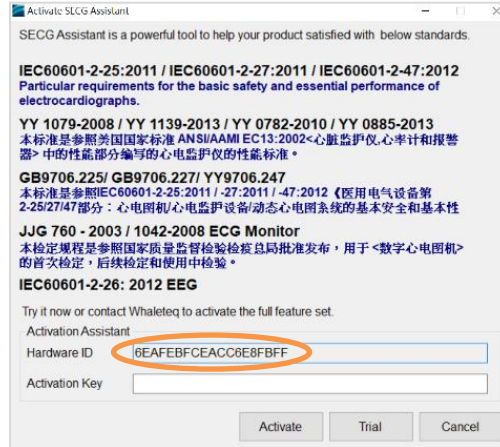


Figure 29: Hardware ID

## Step 2:

A unique activation key will be sent to the user via email. Enter the activation key and click the “Activate” button.

Your SECG Assistant is now activated.

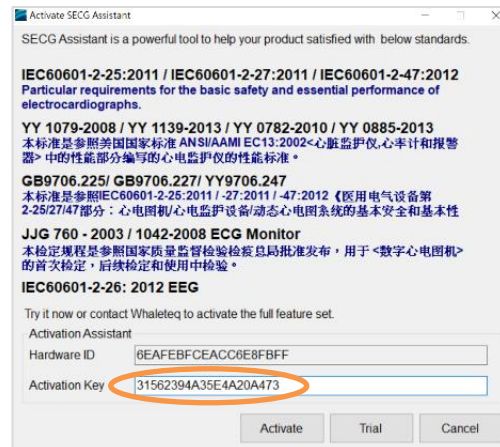


Figure 30: Activation Key

### 3 Testing to IEC and AAMI Standards

#### 3.1 Relation between IEC Figures and WhaleTeq SECG

As of 2012, all IEC standards have harmonized the test circuits. There remains some variation in the switch and parts numbering, however the circuit layout and parts are effectively identical.

To be flexible, the WhaleTeq equipment does not use the switch nomenclature in the standards. Rather, the user should simply follow the effective settings. For example, IEC 60601-2-27 may say “Close switches S, S2 and S4 ...” which means “connect the function generator, short out both input impedance and DC offset functions”. With the concept of the test in mind, and some experience with using the WhaleTeq system, this translation becomes second nature.

The following table provides a cross reference between switches and terminals referred to in the three IEC ECG related standards, the intended function, and settings in WhaleTeq’s Single Channel ECG.

Table 9: Cross Reference Table Between Switches and Terminals

-2-25 / Figure106	-2-27 / Figure105	-2-47 / Figure101	Function	WhaleTeq SECG Settings
S2	S	S2	Connects the function generator to the ECG.	Automatically connected when function is selected.
S5	S1	None	Shorts out the 100kΩ (allows large signals)	The SECG automatically selects Ch1 for small signals and Ch2 for large signals <sup>6</sup> .
S1	S2	S1	Shorts the 620kΩ used for the input	Input impedance, S2 checkbox

<sup>6</sup> If no large signal is required, Ch2 is switched out by relay, to avoid noise from Ch2. Ch1 is always connected.

-2-25 / Figure106	-2-27 / Figure105	-2-47 / Figure101	Function	WhaleTeq SECG Settings
			impedance test.	(default condition is shorted)
S3	S4	S3	Shorts out the DC offset circuit	Automatically selected if DC offset is set to zero
S4	S3	S4	Sets the polarity of the DC offset	Automatically selected if DC offset is set to +/-300mV
P1	P1	P1	Output signal	Any selected output lead electrode is connected to P1
P2/P3	P2/P3	P2/P3	Circuit ground	Any unselected output lead electrode is connected to P2
P6	P6	P6	Neutral electrode (RL/N), with series 51k/47nF	Terminal RL/N in the breakout box (pin 4) is permanently connected to GND/P3 via 51k/47nF

### 3.2 Terminals P1, P2 and P6

According to the test circuits in all three standards, terminals P1, P2 and P6 are defined. However, in some of the tests it is unclear if unused electrodes should be connected to terminal P2 or P6. IEC 60601-2-25, Clause 201.12.4.103 (Input impedance) provides an example case. At first the test states that:

Compliance is checked using the test circuit of Figure 201.106

In that figure, it clearly states that terminals P1 and P2 are for LEAD WIRES, while P6 is intended only for the NEUTRAL ELECTRODE, or RL/N.

However the test then goes on to say:

Connect the sine wave signal generator to any tested LEAD (P1 and P2) with all other LEAD WIRES connected to the N (RL) LEAD WIRE (P6)

The interpretation here is complicated as a “LEAD” refers to the displayed ECG waveform, not specific electrodes. Using Table 201.106, we can infer that for example, “LEAD V1” involves V1, RA, LA, LL, but not V2 – V6. The interpretation could be then that V1 should be connected to P1, with RA, LA and LL to P2, and V2-V6 are connected to terminal P6 along with RL/N. A more reasonable interpretation would be to follow the diagram and test each LEAD wire in turn (first RA, then LA, LL, V1 etc) with all unused LEAD wires connected to P2.

## 4 Software Development Kit

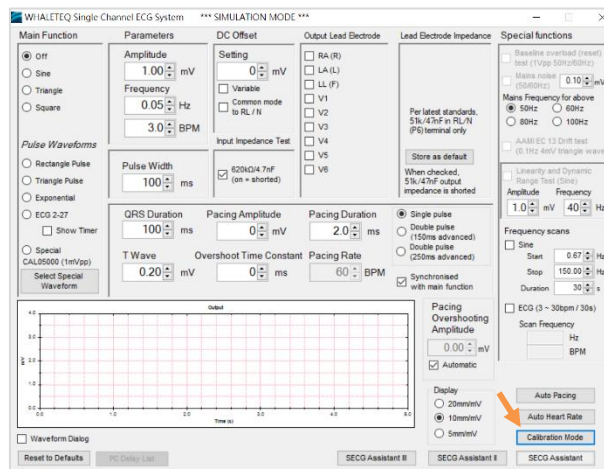
WhaleTeq provides SECG 4.0 software development kit (SDK). All operating parameters and options have corresponding commands in the software development kit. The software development kit contains DLL (Dynamic-link library), which will provide highly efficient program binding and version upgrade, supports C/C++ header and C# interface, and can also be integrated with third-party tools and script languages.

## 5 Calibration and Software Validation

The WhaleTeq SECG 4.0 has undergone a detailed system validation including software. A report for this can be provided on request.

Prior to shipping, each unit is tested for component values and output voltages, using a calibrated precision multi-meter. As WhaleTeq cannot provide ISO 17025 accredited calibration, laboratories which are required to follow ISO 17025 should perform calibration either periodically or on a before use basis, following normal procedures and practice. The extent of calibration may be limited depending on the needs of the laboratory.

As the calibration procedure is complicated, a software assisted calibration mode is provided. The software sets up the SECG as required for the particular tests, and instructs the user on what measurement to make (e.g. measure resistance between RA and RL).



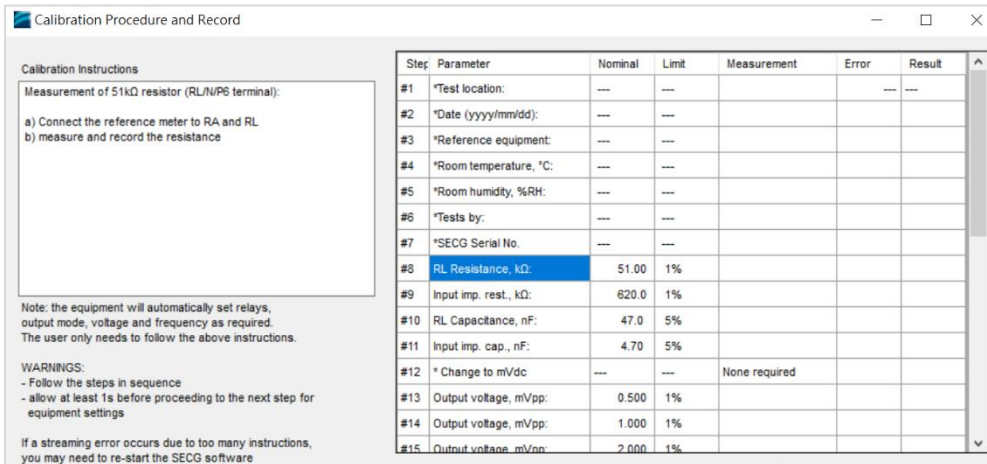


Figure 31: Software Assisted Calibration Mode

The user then enters the results into the form provided, and the software checks if the results are within allowable limits. When complete, the results of calibration are automatically copied to the notepad and stored in a text file at:

C:\WhaleTeq\SECG\_Cal\_yyyymmdd.txt

where “yyyymmdd” is the date based on the PC’s system. If a fixed width font such as “Courier New” is used, the data appears aligned.

The following manual procedure is retained here for reference and explanation. The calibration mode does not include pacemaker rise time, which is included in the manual procedure here.

### Calibration procedure:

Table 10: Calibration Procedure

Parameter	Nominal Value, Tolerance	Method
RL/N resistance	51kΩ ± 1%	The 51kΩ can be measured between any lead electrodes and RL/N terminals. Note: the resistors used are usually accurate to 0.1%, but the measured value will be closer to 51.22kΩ due to

Parameter	Nominal Value, Tolerance	Method
		the inclusion of a 220Ω resistor used for DC offset. This remains in tolerance.
Lead impedance capacitors	47nF ±5%	The 47nF can be measured between RA and RL/N using a calibrated capacitance meter, at 1kHz.
Input impedance resistor	620kΩ±1%	This can be measured as follows: <ul style="list-style-type: none"> <li>• Set Main function to “Off”</li> <li>• Set output to RA</li> <li>• Open switch S2 (input impedance test)</li> <li>• Measure the resistance between RA and LL</li> </ul>
Input impedance capacitance	4.7nF±5%	Measure as for the 620kΩ above, using a capacitance meter at 1kHz. Note: there is about 100pF stray capacitance in the circuit which is included in the measurement. However, even with this the measured result is within the limit.
Precision divider ratio (100kΩ:100Ω)	1000:1 ±0.2%	Resistance values are specified as 100kΩ and 100Ω ± 0.1%, but these cannot be verified once in circuit. An alternate method is used to verify the accurate ratio: <ul style="list-style-type: none"> <li>• Set up a 10mVpp and 0.1Hz square wave to output RA</li> <li>• Using the Fluke 8845A or equivalent precision meter, measure and record the peak to peak voltage at BNC2 by zeroing during the negative cycle, and measuring at the positive cycle (nominally 10Vpp).</li> <li>• Repeat this measurement at the output between RA and LL (nominally 10mV)</li> </ul>

Parameter	Nominal Value, Tolerance	Method
		<ul style="list-style-type: none"> <li>Calculate the ratio and confirm it is 1000:1 <math>\pm 0.2\%</math></li> </ul>
Output voltage	Setting $\pm 1\%$	<p>Method:</p> <ul style="list-style-type: none"> <li>Set up 0.5mVpp and 0.1Hz square wave, output to RA</li> <li>Measure the peak to peak output between RA and LL, using the Fluke 8845A or equivalent, record this as output mVpp</li> <li>Repeat for 1mVpp, 2mVpp, 5mVpp, and 10mVpp</li> <li>Confirm all values are within 1% or 5<math>\mu</math>V of the set value</li> </ul> <p>Note: The Fluke 8845A has suitable accuracy at 10mVpp but has borderline accuracy at 1mVpp and lower. An alternate method is to measure the output at BNC2 and then use the divider ratio above.</p>
DC offset (fixed $\pm 300$ mV)	300mV $\pm 1\%$	<p>Method:</p> <ul style="list-style-type: none"> <li>Set the equipment to "Off"</li> <li>Select +300mV</li> <li>Measure the voltage between RA and LL</li> </ul> <p>Note: the DC offset is sourced from an internal super capacitor which will discharge after <math>\sim 10</math>min. Tests in the standard are typically <math>\ll 2</math> minutes.</p>
DC variable	Setting $\pm 5$ mV or 1%	<p>Use the following procedure:</p> <ul style="list-style-type: none"> <li>Set the equipment to "Off"</li> <li>Select the "Variable" checkbox</li> <li>Set to +200mV DC offset</li> <li>Confirm the value is 200<math>\pm 5</math>mV</li> </ul>

Parameter	Nominal Value, Tolerance	Method
		<ul style="list-style-type: none"> <li>Repeat for +600mV, +1000mV, -200mV, -600mV and -1000mV</li> </ul>
Output frequency	Setting $\pm 0.2\%$	<p>Method:</p> <ul style="list-style-type: none"> <li>Set up 1mVpp and 40Hz sine wave</li> <li>Measure the frequency at BNC2 using any appropriate meter</li> </ul> <p>Note: this verifies the system clock is accurate. Verification of other frequencies or timing is not as this is covered by software validation, although users are free to measure other frequencies and timing. The use of 40Hz is recommended to avoid beating with mains frequency.</p>
Pacemaker pulse characteristics	Voltage $\pm 10\%$ , pulse width $\pm 1\%$ , rise time $< 10\mu\text{s}$ , overshoot $< 5\%$ , settling time $< 5\mu\text{s}$	The pacemaker pulse can be observed directly at the terminals RA and LL (with the output to RA terminal). Use a setting of +700mV and 2ms, so the pulse can clearly be seen above any oscilloscope noise. Measure the amplitude, rise and fall time and overshoot.

## 5.1 Self-Calibration

Self-calibration assists the user calibrates SECG 4.0 before testing.

1. Set up the parameters of the SECG 4.0 AP to “Square, 5 mV, 0.1 Hz” and output to the RA lead electrode as the figure shown below:

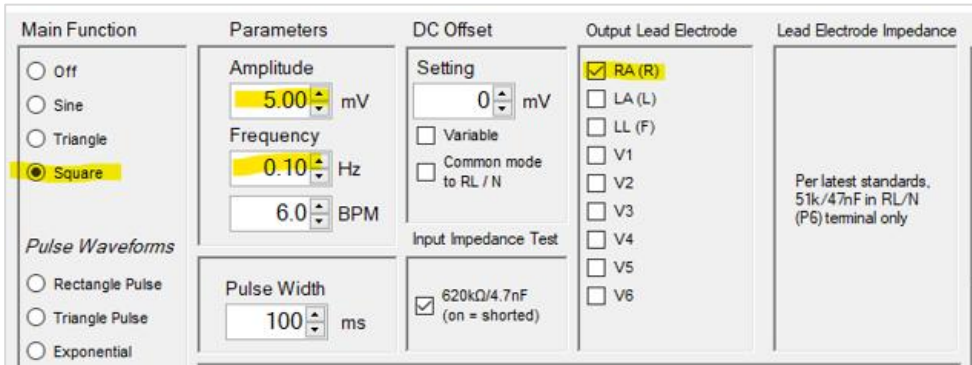


Figure 32: SECG 4.0 Interface

2. Connect the multimeter (Please use the models which are 6 1/2 (6 1/2 digits) or more) to RA and LA of SECG 4.0, and measure the DC mV. The value should be in 1% of 5 mV because the output amplitude of SECG 4.0 gives alternating 5s (0.1 Hz square wave) phases at -2.5mV and +2.5mV, which the multimeter is zeroed (delta function) at one phase (e.g., -2.5mV), with reading taken from the other phase (e.g., +2.5mV) to obtain the 5mV peak-peak value.



Figure 33: Self-Calibration Setup

- SECG 4.0 DC offset check is shown as the red square in the figure below. SECG 4.0 connects DC in series with electrode wire (in the case, RA).

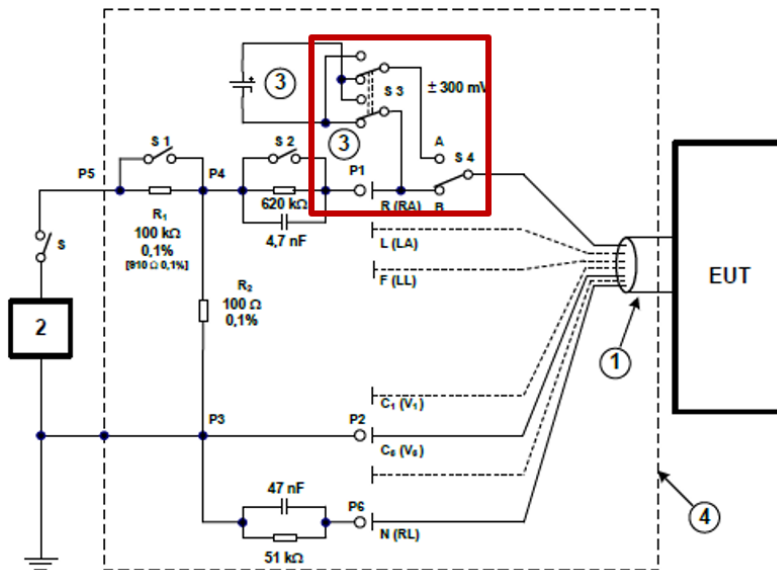


Figure 34: SECG 4.0  $\pm 300\text{mV}$  DC Offset

- The user can verify the DC voltage by setting up the parameters of SECG 4.0 AP to “Square, 0 mV, 0.1 Hz, DC Offset Setting to 300mV and select RA”.

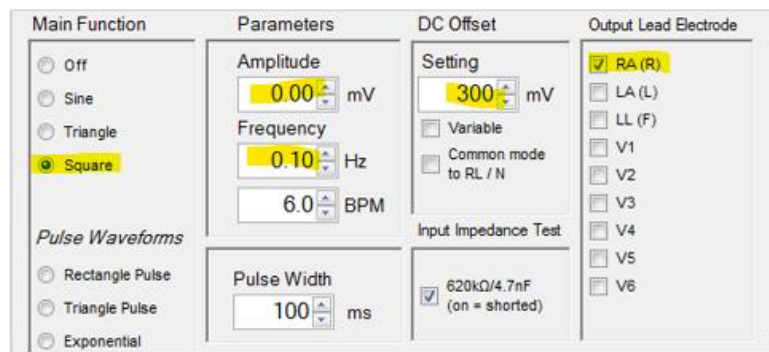


Figure 35: DC Voltage Verification (300mV)

- Connect the multimeter to RA and LA of SECG 4.0 and measure the DC voltage. The value should be in 1% of 300mV. The setup is shown in the below figure.



Figure 36: Self-Calibration Setup

- If the user wants to check the DC voltage other than 300mV, set the DC voltage from -1000mV to +1000mV with 5% accuracy. Please look at the figure below for details.  
 (This extra DC voltage can support some other than 300mV testing, like IEC 60601-2-25, 201.12.4.101 “Indication of inoperable ECG”, this test item may need DC voltage more than 300mV. For detailed testing methods, please contact WhaleTeq.)

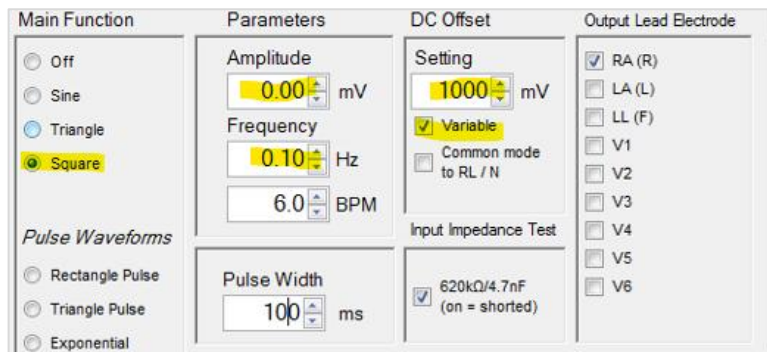


Figure 37: DC Voltage Verification (>300mV)

- Use the same way as above to check the DC voltage with the multimeter.

The above steps assist the user to make sure SECG 4.0 is outputting correct signals before the test.

Reminder: Self-calibration is to facilitate the user to quickly confirm the signal quality before testing, not to replace the original calibration service

recommended every year.

Whaleteq original calibration service is equipped with calibration equipment specially designed for physiological simulator to ensure the accuracy of calibration, and can calibrate the offset value of the device within the original specification of Whaleteq. Under normal use, the device is recommended to be calibrated once a year. Please refer to the contact information and contact Whaleteq for the original calibration service.

Note: if Whaleteq detects that the components of the device are damaged and makes it impossible to adjust, it shall be sent back for maintenance.

## 6 Troubleshooting

Table 11: Troubleshooting

Problem	Resolution
SECG 4.0 (test unit) not recognized (USB driver is installed correctly)	Recognition of the SECG 4.0 needs to be done in order: 1. Close the SECG 4.0 software if it's open. 2. Disconnect the SECG 4.0 for ~2s. 3. Reconnect the SECG 4.0. 4. Wait for the recognition sound. 5. Activate the SECG 4.0 software.
SECG 4.0 stops responding	Move the main function mode to "Off" and then return to the function being used. If this does not work, close the SECG 4.0 software, disconnect the SECG 4.0, reconnect the SECG 4.0 and restart it.

## 7 Cautions

1. Before using products, use a grounded wrist strap or touch a grounded safely object or a metal object, such as the power supply case, to avoid damaging them due to static electricity.
2. WhaleTeq does not recommend to connect test equipment with DUT to conduct Electrostatic Discharge (ESD) test. This may cause

- unexpected damages to test equipment. Please contact WhaleTeq for alternatives before ESD test.
3. For operating “Firmware Update” feature, there are risks of losing data if improper options are performed during the Firmware Update period.
  4. Warranty void if QC PASS label is removed or tampered with.
  5. The professional testing instrument, not a medical device, is for testing only, and will not involve human or clinical use.

## 8 Ordering Information

### 8.1 Standard Package

Table 12: SECG 4.0 Standard Package

Part No.	Description	Quantity
100-EC00102	<p><b>Model No.:</b> SECG 4.0</p> <p>Single channel ECG test system for 12 leads (RA, LA, LL, N, V1-V6), including one ECG breakout box (BB-C1) and 12 compound terminals</p> <p>Package contents:</p> <ul style="list-style-type: none"> <li>• SECG 4.0 x 1</li> <li>• 12-lead breakout box x 1</li> <li>• Compound terminal x 12</li> <li>• USB cable x 1</li> <li>• Grounding wire x 1</li> </ul>	1

### 8.2 Optional Software, Accessories and Services

- **Optional Software Add-on Pack**

Table 13: Optional Software Add-on Pack

Part No.	Description
HA0-SE0F001	Auto setup for IEC 60601-2-25:2011 performance tests

Part No.	Description
HA0-SE0F002	Auto setup for IEC 60601-2-27:2011 performance tests
HA0-SE0F003	Auto setup for IEC 60601-2-47:2012 performance tests
HA0-SE0F004	Auto setup for China YY1079-2008 performance tests
HA0-SE0F005	Auto setup for China YY1139-2013 performance tests
HA0-SE0F006	Auto setup for China YY0782-2010 performance tests
HA0-SE0F007	Auto setup for China YY0885-2013 performance tests
HA0-SE0F008	Auto setup for China JJG760-2003 performance tests
HA0-SE0F010	Auto setup for China JJG1042-2008 performance tests
HA0-SE0F011	Auto setup for China JJG1041-2008 performance tests
HA0-SE0F012	Auto setup for China GB 9706.225-2021 performance tests
HA0-SE0F013	Auto setup for China GB 9706.227-2021 performance tests
HA0-SE0F014	Auto setup for China YY 9706.247-2021 performance tests

- **Optional Accessory**

Table 14: Optional Accessory

Part No.	Description	Quantity
100-OT00001	USB isolator for reducing the power noise from PC. Recommended to use with SECG 4.0, MECG 2.0, HRS200, HRS100+, SEEG 100 and SEEG 100E.	1

- **Optional Calibration Service and Warranty Extension**

Table 15: Optional Calibration Service and Warranty Extension

Part No.	Description
YY0007	<b>Model No.:</b> C3 Provides (3) years of calibration service coverage. WhaleTeq equipment can be calibrated to original performance on the basis of (1) year interval.
YY0008	<b>Model No.:</b> R3 Extends the limited warranty from (1) year to (3) years.

## 9 Revision History

Table 16: Revision History

Version	Modified Contents	Issued Date
2020-12-31	Add 4 Software Development Kit (SDK) 8 Ordering information 9 Version information	2020-12-31
2021-06-29	Add 7 Cautions	2021-06-29
2021-11-26	Add 5.1 Self-calibration	2021-12-03
2022-10-13	Update 2.5 Main Screen 2.7 Software Options — SECG Assistant 8.2 Purchase software and accessories	2022-10-14
2024-12-04	<ul style="list-style-type: none"> <li>• Update</li> <li>1.4 Main Specifications</li> <li>2.3 Set Up a Low-noise Test Environment</li> <li>5.1 Self-Calibration</li> <li>8 Ordering Information</li> <li>Figure 21</li> <li>• Add</li> <li>2.6.11 2.6.11 Download PhysioNet Database</li> </ul>	2025-01-23
2025-05-19	Update 2.2 Connecting to the ECG 6 Troubleshooting Table 2 Table 9	2025-05-29
2025-11-13	Update Table 4	2025-11-21

## 10 Contact WhaleTeq

WHALETEQ Co., LTD

[service@whaleteq.com](mailto:service@whaleteq.com) | (O)+886 2 2517 6255

8F., No. 125, Songjiang Rd., Zhongshan Dist., Taipei City 104474, Taiwan