

RDCA

Rhythm Database Compliance Analyzer Software

A Quick Tool to Compare with Medical Databases and Perfect Algorithm

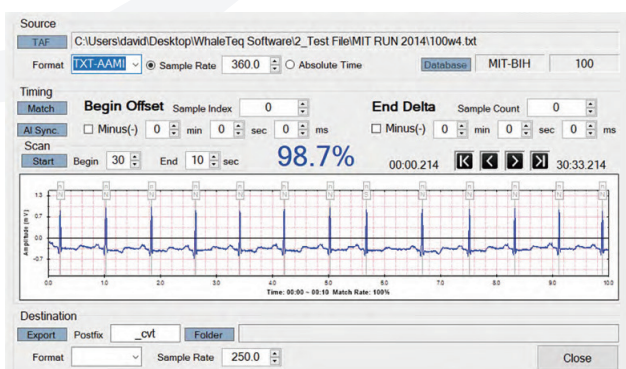
- Support comparisons of TAF (Test Annotation File), which is generated by DUT algorithms from either digital or analog database signal input, to RAF (Reference Annotation File)
- The AI Sync function automatically synchronizes the TAF (Test Annotation File) and RAF (Reference Annotation File) to eliminate their time difference for optimizing comparison results
- Error data and error timing can be displayed for advanced algorithm improvement
- Intuitive software interface allows user to complete the comparison within a few mouse clicks
- Comparison result is identical with PhysioNet WFDB library software and can be exported to a report file

Supported Standards and Test Clauses

Standard	Test Clause	Clause Name
IEC60601-2-47 : 2012	201.12.1	Accuracy Controls and Instruments
ANSI/AAMI EC57:2012		Testing and reporting performance results of cardiac rhythm and ST segment measurement Algorithms
YY0885-2013	50.101	Automatic analysis

• AI Sync Function Assists to Get a Comparable TAF

Optimize the label position and time difference of Test Annotation File at your fingertips



• 4 Steps to Complete the Database Comparison

TAF File	Format	Database	BEAT	QRS	QRS ID	VEB SA	VEB ID	VEB EOB													
100.atr	BIN-MIT	MIT-BIH	200	1434	13	0	2	0	683	1	0	1	2	1	99.82	99.91	97.57	100.00	0.00		
101.atr	BIN-MIT	MIT-BIH	201	1040	2	0	0	196	2	0	2	0	0	0	98.09	100.00	98.99	77.17	4.49		
102.atr	BIN-MIT	MIT-BIH	202	1316	2	1	0	0	13	0	0	1	0	0	99.73	100.00	86.67	86.67	0.11		
103.atr	BIN-MIT	MIT-BIH	203	1545	57	2	10	16	276	0	0	20	14	3	98.51	99.59	73.99	94.52	0.76		
105.atr	BIN-MIT	MIT-BIH	205	2122	4	11	0	0	59	0	0	1	1	0	99.91	100.00	90.77	100.00	0.00		
107.atr	BIN-MIT	MIT-BIH	207	1374	45	0	1	0	64	0	0	2	0	0	99.81	99.94	58.72	100.00	0.00		
106.atr	BIN-MIT	MIT-BIH	208	1301	3	154	3	0	816	147	0	7	5	2	99.43	99.88	99.03	100.00	0.00		
109.atr	BIN-MIT	MIT-BIH	209	2141	1	0	1	0	0	0	0	1	0	0	99.96	99.96	0.00	-	0.00		
108.atr	BIN-MIT	MIT-BIH	210	1878	9	6	1	0	159	1	1	1	3	2	99.59	99.91	90.91	95.54	0.34		
109.atr	BIN-MIT	MIT-BIH	212	2284	0	0	0	0	0	0	0	1	0	0	99.96	100.00	-	-	0.00		
111.atr	BIN-MIT	MIT-BIH	213	2207	10	223	0	0	183	46	0	2	1	0	99.89	100.00	93.85	98.92	0.08		
114.atr	BIN-MIT	MIT-BIH	214	1663	5	1	0	0	197	2	0	1	1	0	99.89	100.00	92.92	100.00	0.00		
112.atr	BIN-MIT	MIT-BIH	215	2660	6	0	0	0	122	1	0	1	0	0	99.96	100.00	93.13	100.00	0.00		
113.atr	BIN-MIT	MIT-BIH	219	1625	0	0	0	0	39	0	0	0	1	0	99.94	100.00	76.47	100.00	0.00		
115.atr	BIN-MIT	MIT-BIH	220	1680	0	0	0	0	0	0	0	1	0	0	99.94	100.00	-	-	0.00		
114.atr	BIN-MIT	MIT-BIH	221	1692	0	0	0	0	315	0	0	1	1	0	99.90	100.00	99.68	100.00	0.00		
115.atr	BIN-MIT	MIT-BIH	222	1224	0	0	0	0	0	0	0	11	0	0	99.43	99.62	-	-	0.00		
116.atr	BIN-MIT	MIT-BIH	223	1651	9	1	0	4	443	7	0	1	1	0	99.91	100.00	97.36	98.44	0.40		
117.atr	BIN-MIT	MIT-BIH	228	1396	5	0	2	0	297	0	0	1	0	0	99.94	99.82	98.34	100.00	0.00		
117.atr	BIN-MIT	MIT-BIH	230	1857	1	0	0	0	0	0	0	1	0	0	99.95	100.00	0.00	-	0.00		
118.atr	BIN-MIT	MIT-BIH	231	1277	0	0	0	0	0	0	0	1	0	0	99.92	100.00	-	-	0.00		
119.atr	BIN-MIT	MIT-BIH	232	317	0	0	1	0	0	0	0	0	0	0	100.00	99.93	-	-	0.00		
119.atr	BIN-MIT	MIT-BIH	233	1857	6	2	0	1	685	4	0	1	0	0	99.92	100.00	98.99	99.85	0.85		
121.atr	BIN-MIT	MIT-BIH	234	2237	1	0	0	1	2	0	0	0	0	0	100.00	100.00	66.67	66.67	0.04		
122.atr	BIN-MIT	MIT-BIH																			
123.atr	BIN-MIT	MIT-BIH																			
124.atr	BIN-MIT	MIT-BIH																			
SUM			72611	220	413	142	66	5576	216	7	113	33	0	0	99.77	99.82	94.51	97.41	0.19		
GROSS																					
Average																					
Beat summary statistics for MIT-BIH database																					
Total QRS complexes: 79251																					
Total VEBs: 5649																					
Summary of results from 44 records																					

- STEP 1 Get Test Annotation File (TAF) from ECG DUT
- STEP 2 Load TAF of ECG DUT
- STEP 3 Compare TAF with RDCA built-in Reference Annotation File (RAF)
- STEP 4 Get comparison result. The result can be exported to a report file.



RDCA
Scan for
more information

www.whaleteq.com

service@whaleteq.com

8F., No. 125 Songjiang Rd., Zhongshan Dist., Taipei City 104474, Taiwan

+886-2-2517-6255

+886-2-2596-0702