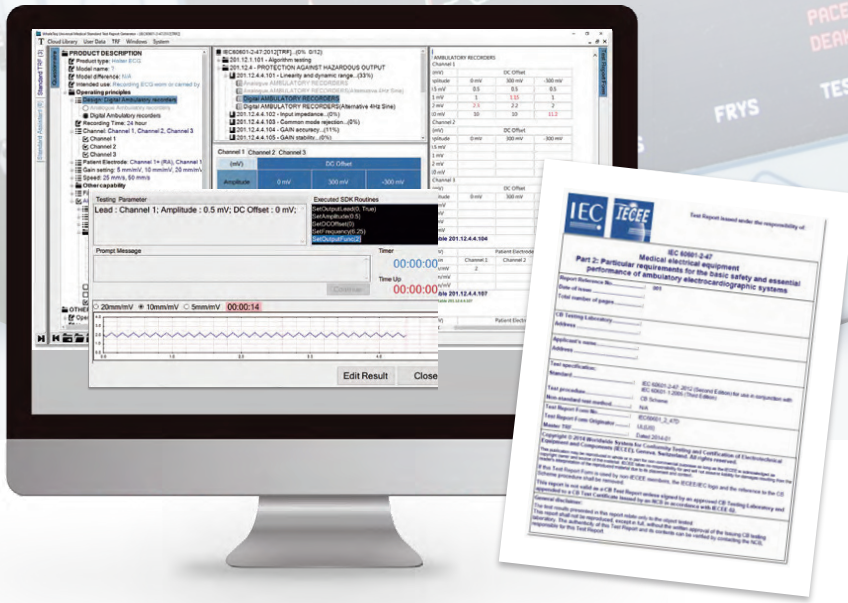


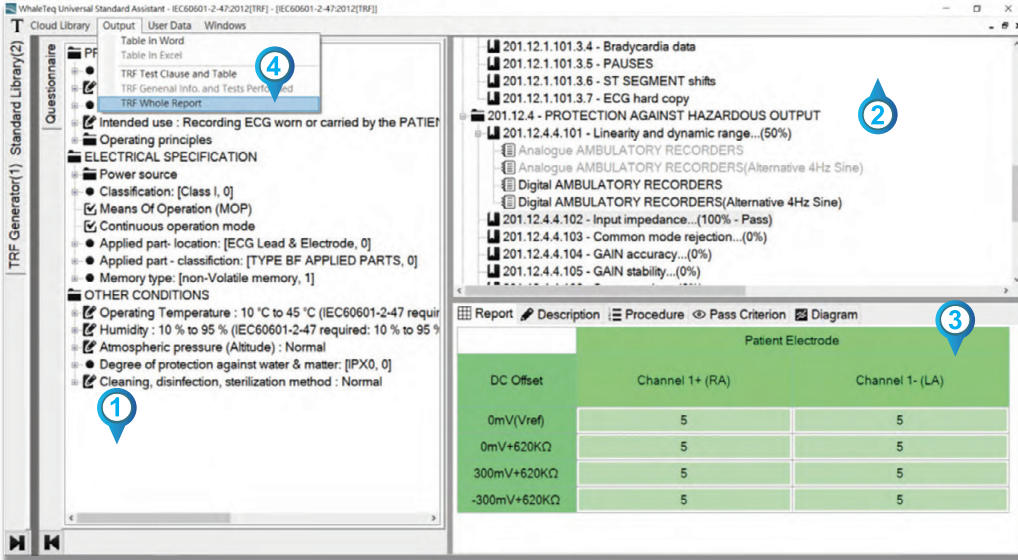
# TRF 报告产生软件



合规性测试及产出测试报告的整合解决方案，有效降低您在医疗标准测试上的所有花费，协助您轻松完成合规性测试及产出 TRF 测试报告，可搭配 SECG 5.0 AIO、SECG 4.0、CMRR 3.0+、CMRR 3.0 使用，支持国际医疗标准 IEC60601-2-25、IEC60601-2-27、IEC60601-2-47。

- 减少测试花费，产出一致性的测试报告
- 填写问卷即可确认产品特性及相类测试项目
- 有效降低人为测试失误
- 减少医疗法规员工训练时间与费用成本
- 加速报告汇总时间
- 点击测试表格即可控制鲸扬测试仪器起始测试
- 可汇入 RDCA / CDCA 数据库比对分析结果
- 输出报告格式可随 IEC TRF 最新版本更新

## 轻松完成合规性测试及产出 TRF 测试报告



- STEP 1**      填写问卷即可确认产品特性及相关测试项目
- STEP 2**      点击测试表格即可控制鲸扬测试仪器起始测试
- STEP 3**      可汇入 RDCA / CDCA 数据库比对分析结果
- STEP 4**      输出报告格式可随 IEC TRF 最新版本更新

## 测试报告范例

201.12.4.4.102	Input impedance		P
	Input impedance was greater than 10MΩ for the frequency specified in the test and for all input channels, and requirement was met across total required d.c offset range capabilities (MΩ).....:	(See appended table 201.12.4.4.102)	P
	a) Circuit of Fig. 201.101 used		P
	b) Switches S1 and S2 closed, S3 put in position A, and a 10Hz sinusoidal signal of 5mV amplitude p-v applied across P3 and P4		P
	c) PATIENT ELECTRODE connections of the first channel connected to P1 and P2 with all other PATIENT ELECTRODE connections connected to P6		P
	d) S1 opened and strady-state output amplitude measured did not decrease by more than 6% (mV p-v, % decrease).....:	(See appended table 201.12.4.4.102)	P
	e) Test repeated with offset voltages of 300 and 300mV, respectively, (mV p-v, % decrease).....:	(See appended table 201.12.4.4.102)	P
	f) Tests repeated for all other ECG channels .....	(See appended table 201.12.4.4.102)	P
	g) PLAYBACK EQUIPMENT output amplitudes measured .....	(See appended table 201.12.4.4.102)	P

### Appendix 1

#### Test Table 201.12.4.4.101

#### Patient Electrode: Channel 1+ (RA)

Amplitude	DC Offset		
	0mV	300mV	-300mV
0.5mV	0.5	0.5	0.5
1mV	1	1	1
2mV	2	2	2
10mV	10	10	10

